



How many do you need to **protect** your family?



bluguard security system set

bluguard L900



When we talk about the security system, we need a system that can safely protect our homes anytime at ease, can be controlled and updated when we are away from our homes.

Bluguard L900 offers the intelligent 9 zones system to protect your family, apartment or office at a competitive cost. It comprises tone feedback and call in/out functions to users via the conventional phone line as the primary line and optional GSM line as the backup line.

The key functions are:-

- Link up to 4 keypads
- Auto arm/disarm timers
- Telephony cut monitored
- CMS reporting (Contact ID)
- Optional upgrades to 8 "smart" home automation points for lighting, air-conditional and home appliances.



bluguard L900V



Bluguard L900V offers the advance features than L900. It provides a pre recorded voice feedbacks to users whenever the system callout or received authorised call. The voice feedbacks will be able to provides the information to users on:-

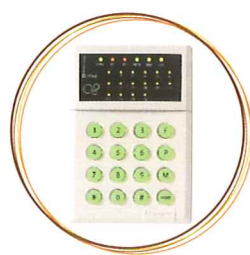
- Status of zones
- Status of system data such as:- power, arm status, battery, etc
- Status of the siren
- Status of home automations such as:- lights, air-cond, etc

Bluguard L900V gives you the flexibility and it suits for user that prefer simple and user friendly system. By using a Listen-in module, you can control and listen to your home environment. In addition, the system can be configured to control EM-lock installed at entrance.





bluguard L1600V

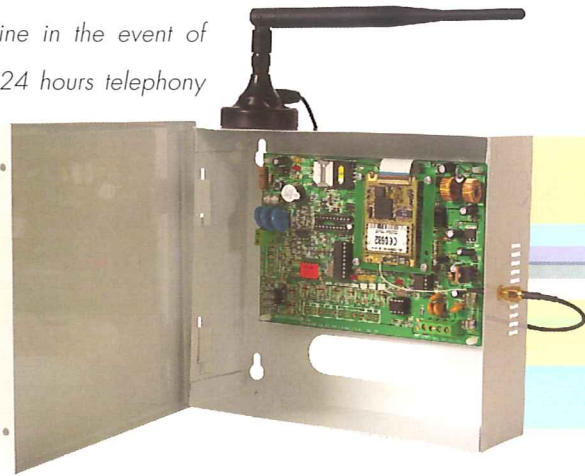


If you required more zones on your system, Bluguard L1600 will be your ultimate choice. The system is designed to suit users that might require more than conventional 9 zones system. The system provides 16 zones and one key switch for remote control unit. It gives the flexibility to users to upgrade:-

- 16 zones
- 1 for key switch for remote arm/disarm
- 16 automation points
- Voice-feedback ability
- Arm/disarm for 2 partitions

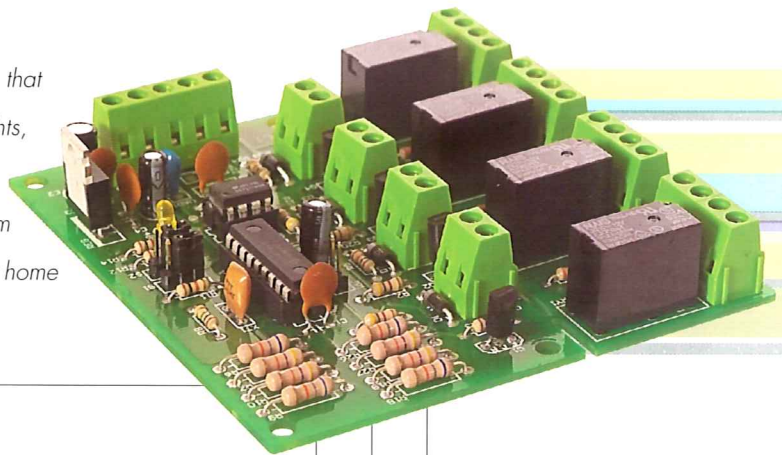
GSM-100

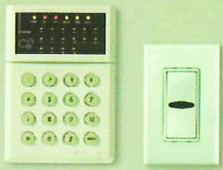
GSM-100 is the plug-on module that provides an alternative line in the event of telephony fails or when the line is being tampered. It comes with 24 hours telephony monitoring protocol that will inform users in seconds when the line is being tampered. The module is capable to be deployed under any mobile provider (e.g. Maxis, Digi, Celcom, etc.) with a single SIM card. It can be configured to sent out the SMS or connect to CMS center whenever the system is being triggered. The module is integrated with voice-feedback ability during call in/out report.



BLU-L900-HA04 HOME AUTOMATION MODULE

BLU-L900-HA04 is a 4 point home automation module that can be utilized to control home appliances (e.g lights, air-cond, etc.) The module will provide a convenience route for users and enable them to control appliances from centralised keypad or mobile phone whenever they are at home or outside their premises.





bluguard

bluguardsecuritysystem

Everyday our daily life is being busy with jobs, appointments, tasks, and meeting. It offers little time for us when it comes about the matter of protecting our homes and family when we are away from our premises. Thus, the security system which is reliable, user friendly and efficient will save us a lot of time and leave us a peace of mind.

Wherever you are, BLUGUARD system provides the necessary feedback ANYTIME, ANYWHERE, it's all in your hand.

With the in-house design expertise, Bluguard has built state-of-the security system which provides:-

USER FRIENDLY SYSTEM

Intelligent one touch features gives the convenience to user to arm/disarm, control and feedback by touching a single button.

EXPANDABLE PLATFORM

The Bluguard system provides the flexibility on future expansion. The home automation and GSM will be on the optional module which can be upgraded in future. The system can be reprogrammed to add the SMS feedback features.

RELIABLE

The Bluguard system has been field tested and more that thousands of installation have been installed over in Malaysia. The Bluguard system has been approved by SIRIM.

ADVANCED TECHNOLOGY

The Bluguard system streamlined the technology that tailored for today and tomorrow needs. The effort in R&D has been widely recognised and awarded MSC status.

SAFE and SECURE

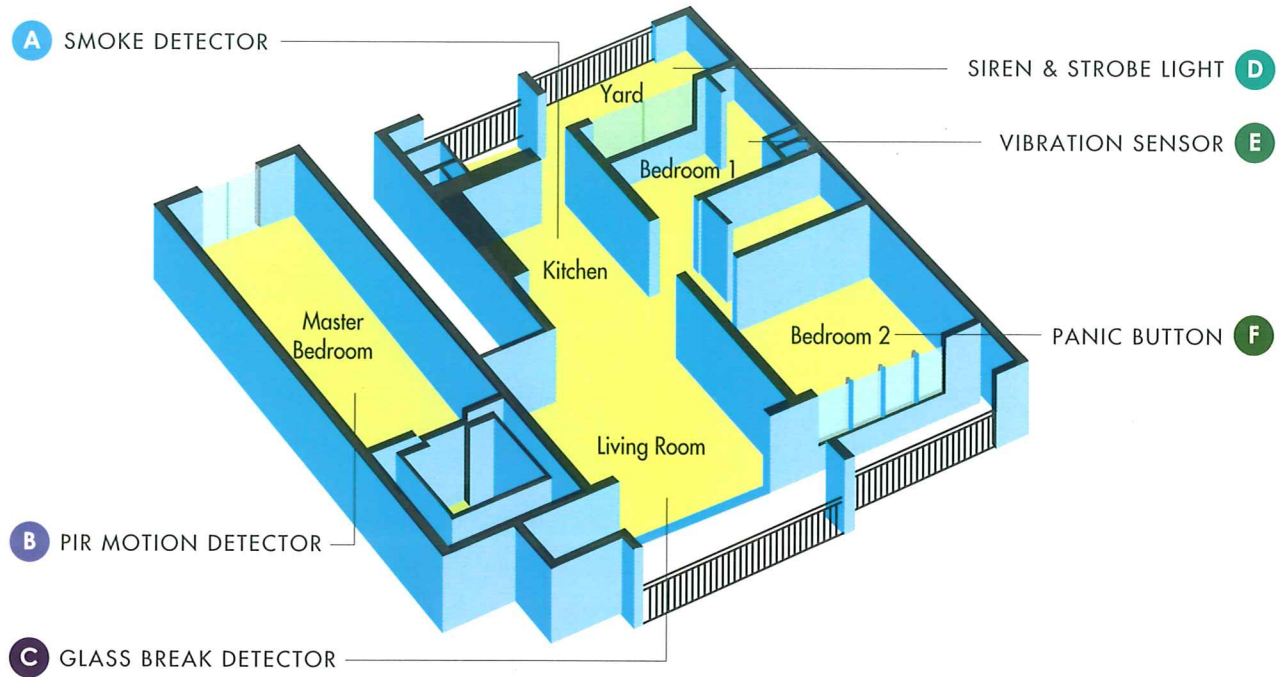
The Bluguard system provides the feedback via the conventional phone and GSM as alternative line if the line has been tampered. Thus, you can be reassured that the status of system will be updated to you.

THE BLUGUARD SYSTEM OFFERS USER WITH:-

- Intelligent "One Touch Features"
- Speedy feedback via telephony line or GSM line
- Voice feedback
- SMS feedback
- Expandable platform to 16 zones, GSM, etc
- Superb lightning protection

how's the bluguard system protect your house?

The Bluguard system provides a stable platform to integrate with sensors installed around the premise. (e.g. dining room, bedroom, etc). The sensors will act as the virtual guard that will generate immediate warning signal to system whenever the system is being triggered by intruders. The system will alert owners or monitoring center through the telephony line or GSM line.



A SMOKE DETECTOR

Smoke detector is a highly effective sensor in preventing loss of life and property caused by fire accident. It detects a concentrated smoke and generates the immediate alarm signal to system.

B PIR MOTION DETECTOR

PIR motion detector is an electronic based device that detect intruder by sensing motion at a defined protected area.

C GLASS BREAK DETECTOR

Glass break detector is a device that generate the alarm signal to system when it senses the breaking on the glass.

D SIREN & STROBE LIGHT

Siren & strobe light is an audio and visual indicator. When an intrusion is taken place, the system will turn on the siren & strobe light to notify users and people around the premises.

E VIBRATION SENSOR

Vibration sensor is commonly installed at windows with grill. When a vibration of niche frequency is detected at the protected grill, an alarm signal will be generated to the system.

F PANIC BUTTON

Panic button is a one touch button for users in the event of emergency.