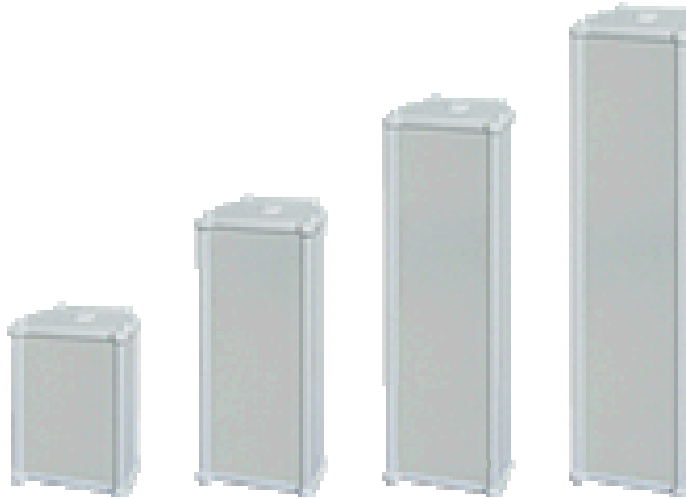


# KCS-420 COLUMN SPEAKER

---

## Front View



## Features

- ❑ Suitable for indoor and outdoor wall mount installation.
- ❑ Supplied with wall mount bracket and 100V line matching transformer.
- ❑ Wall mount type column speaker suitable for speech and music reproduction.

## Technical Specifications

<b>Power (Rated)</b>	<b>20W</b>
<b>Impedance</b>	<b>500 ohm</b>
<b>Tapping (w)</b>	<b>20W</b>
<b>Speaker Dimension</b>	<b>2 x 100mm</b>
<b>Frequency Response</b>	<b>100Hz ~ 15 KHz</b>
<b>SPL (1w/1m)</b>	<b>92dB</b>
<b>Dimensions (W x H x D)</b>	<b>152 / 373 / 100</b>
<b>Net Weight</b>	<b>2.54 kg</b>