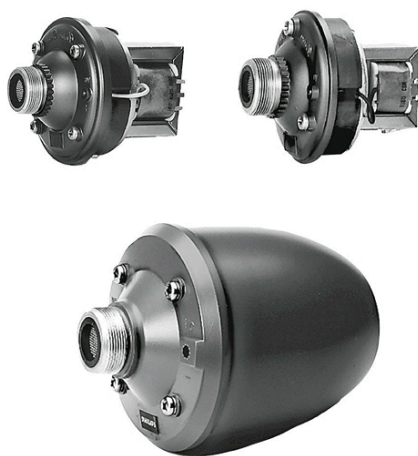




LBN 900x/00 Driver Units



- ▶ **High efficiency**
- ▶ **15 W, 30 W and 50 W versions**
- ▶ **1 3/8" screw thread**
- ▶ **Simple power setting**
- ▶ **Complies with international installation and safety regulations**

The Bosch professional horn loudspeaker system comprises a range of three high-efficiency driver units that can be installed into one of the compatible circular and rectangular horns (supplied separately without drivers). A standard 1 3/8" screw thread is used for mounting the drivers into horns. All models are treated against corrosion.

System Overview

The LBN 9000/00 is a 15 W driver unit and the LBN 9001/00 is a 30 W driver unit. Connections to 100 V lines are made using push-on spade terminals.

The LBN 9003/00 is a more powerful 50 W model. Connections to 100 V lines are made using screw terminals.

Functions

All driver units include a matching transformer to allow power tapping. See circuit diagram overleaf. This feature also allows impedance matching for different amplifier types.

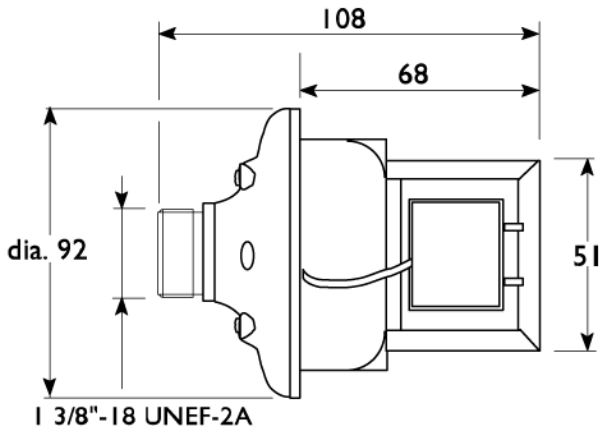
A range of horns is available for these driver units to allow tailor-made solutions for a variety of sound reinforcement applications. Three circular types (LBC 3403, LBC 3404 and LBC 3405 with diameters of 255, 380 and 510 mm respectively) and one rectangular type (LBC 3406, measuring 380 x 205 mm) are available. They are made from flame-retardant, high-impact plastic for high strength and low weight, and are finished in light grey. A sturdy steel mounted bracket is also supplied. See separate datasheet.

Certifications and Approvals

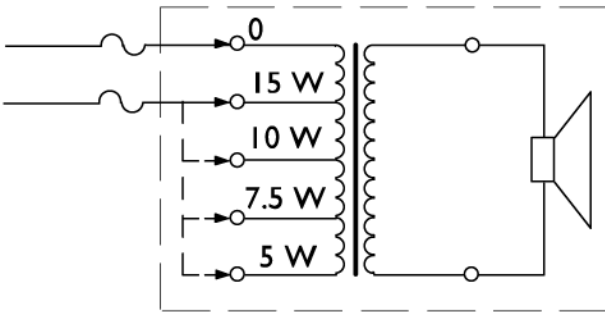
All Bosch loudspeakers are designed to withstand operating at their rated power for 100 hours in accordance with IEC 268-5 Power Handling Capacity (PHC) standards. Bosch has also developed the Simulated Acoustical Feedback Exposure (SAFE) test to demonstrate that they can withstand two times their rated power for short durations. This ensures extra reliability under extreme conditions, leading to higher customer satisfaction, longer operating life, and much less chance of failure or performance deterioration.

Installation/Configuration Notes

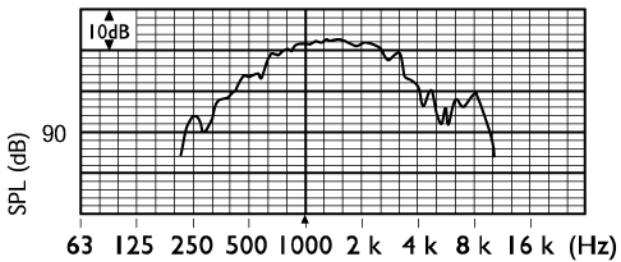
LBN 9000/00



Dimensions in mm

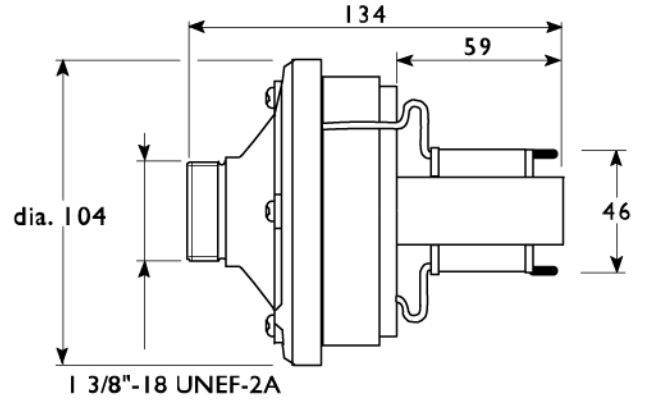


Circuit diagram

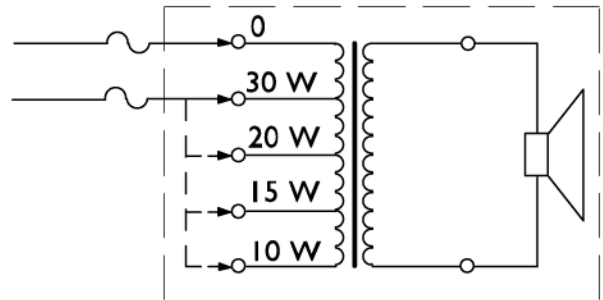


Frequency response

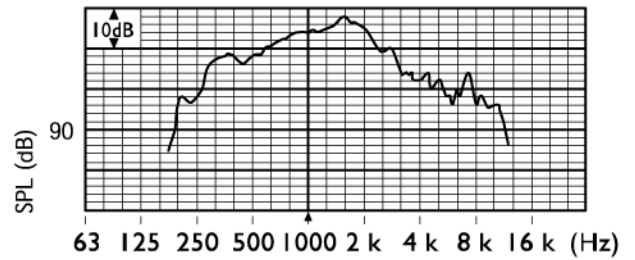
LBN 9001/00



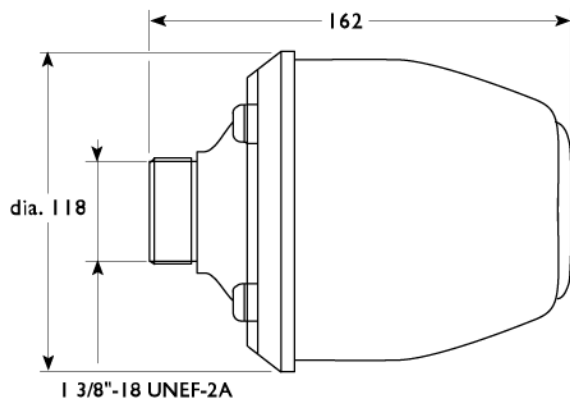
Dimensions in mm



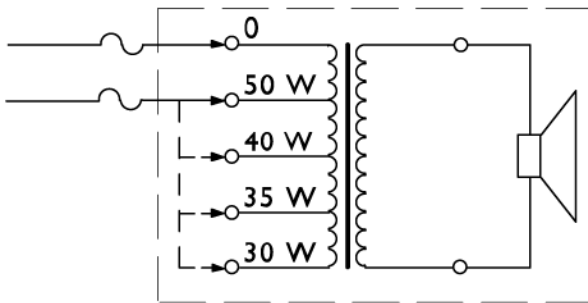
Circuit diagram



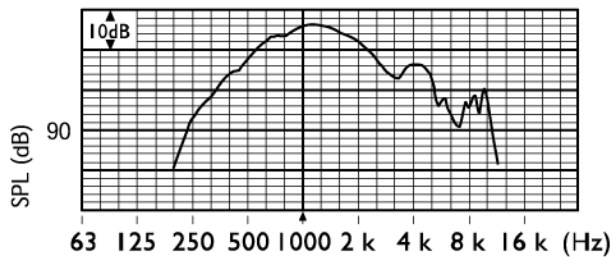
Frequency response

LBN 9003/00

Dimensions in mm



Circuit diagram



Frequency response

Ordering Information**LBN 9000/00 Driver Unit, 15 W**

100 V, 22.5 / 15 W max / rated power (PHC)

LBN 9001/00 Driver Unit, 30 W

100 V, 45 / 30 W max / rated power (PHC)

LBN 9003/00 Driver Unit, 50 W

100 V, 75 / 50 W max / rated power (PHC)

Accessories**LBC 3403/15 Horn, Circular, 10" without Driver**

diameter = 255 mm

Ordering Information**LBC 3404/15 Horn, Circular, 15" without Driver**

diameter = 380 mm

LBC 3405/15 Horn, Circular, 20" without Driver

diameter = 510 mm

LBC 3406/15 Horn, Rectangular, 8 x 15" without Driver

diameter = 235 x 390 mm

LBN 900x/00 Driver Units



LBN 9000/00



LBN 9001/00



LBN 9003/00

Electrical			
Max. power	22.5 W	45 W	75 W
Rated power (PHC)	15 / 10 / 7.5 / 5 W	30 / 20 / 15 / 10 W	50 / 40 / 35 / 30 W
Sound pressure level at rated power / 1 W (1 kHz, 1 m)*	125 / 113 dB (SPL)	129 / 114 dB (SPL)	131 / 114 dB (SPL)
Effective frequency range (-10 dB)*	400 Hz to 9 kHz	300 Hz to 8 kHz	400 Hz to 5 kHz
Rated voltage	100 V	100 V	100 V
Rated impedance	670 ohm	330 ohm	200 ohm
Voice coil impedance	8 ohm	16 ohm	16 ohm
Mechanical			
Dimensions (L x Dmax)	108 x 92 mm (4.25 x 3.62 in)	134 x 104 mm (5.28 x 4.09 in)	162 x 118 mm (6.38 x 4.65 in)
Weight (without horn)	1.3 kg (2.9 lb)	2.1 kg (4.6 lb)	3.2 kg (7.0 lb)
Screw thread	exterior thread, 1 3/8" 18 turns per inch	exterior thread, 1 3/8" 18 turns per inch	exterior thread, 1 3/8" 18 turns per inch
Environmental			
Operating temperature	-25 to +55 °C (-13 °F to +131 °F)	-25 to +55 °C (-13 °F to +131 °F)	-25 to +55 °C (-13 °F to +131 °F)
Storage temperature	-40 to +70 °C (-40 °F to +158 °F)	-40 to +70 °C (-40 °F to +158 °F)	-40 to +70 °C (-40 °F to +158 °F)
Relative humidity	<95%	<95%	<95%

* Measured with horn type LBC 3405

Europe, Middle East, Africa:
Bosch Security Systems B.V.
P.O. Box 80002
5600 JB Eindhoven, The Netherlands
Phone: + 31 40 2577 284
Fax: +31 40 2577 330
emea.securitysystems@bosch.com
www.boschsecurity.com

Americas:
Bosch Security Systems, Inc.
130 Perinton Parkway
Fairport, New York, 14450, USA
Phone: +1 800 289 0096
Fax: +1 585 223 9180
security.sales@us.bosch.com
www.boschsecurity.us

Asia-Pacific:
Bosch Security Systems Pte Ltd
38C Jalan Pemimpin
Singapore 577180
Phone: +65 6319 3450
Fax: +65 6319 3499
apr.securitysystems@bosch.com
www.boschsecurity.com

Represented by