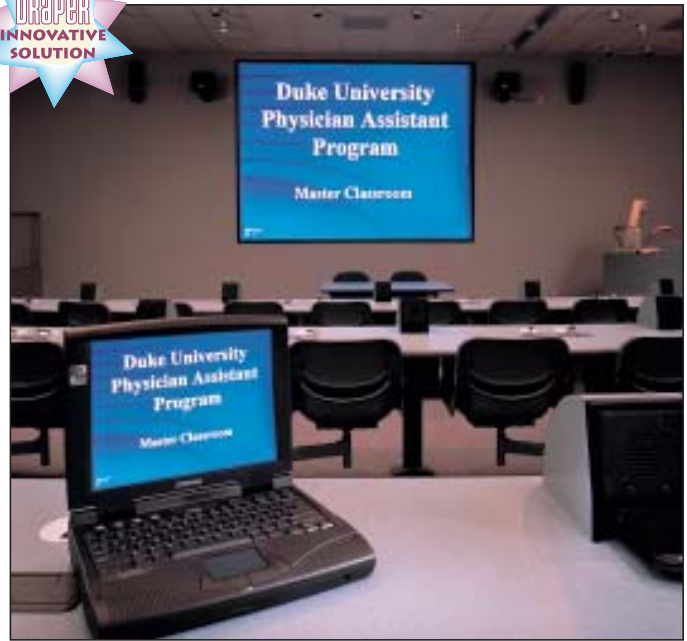


Clarion

Projection Perfection

Improve your image—with a CLARION projection screen. How? The viewing surface is *perfectly flat*. And a perfectly flat viewing surface means *perfect picture quality*. The CLARION's viewing surface is stretched tightly over a self-concealing aluminum frame, which also forms an attractive border, for a clean, theatre-like appearance.



System Options

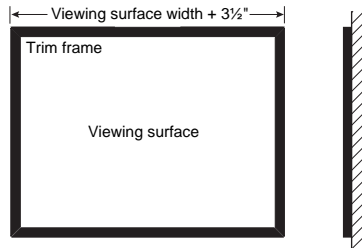
- **Viewing Surfaces**—M1300, M2500, HiDEF GREY or glass beaded.
- **Standard Sizes**—Listed in chart.
- **Custom Sizes**—Any size up to the maximum standard size in the chart. Overall size, including frame, equals image area plus 3½”.
- **Frame Finishes**—Black aluminum is standard, white is available. This frame may be covered with velvety black VEL-TEX to eliminate reflections on the frame. Hardwoods and laminates also available and are permanently attached to the structural aluminum frame.

Laminates—Grey, maroon, tan or black, as well as custom finishes.

Hardwoods—Light, medium or dark oak, walnut or mahogany.

- **Black Masking Borders**—The frame serves as the border in all formats.

- **Mounting**—Permanent wall mount (brackets included) or wall mount with an optional manual or motorized tilt feature. Max. overall depth: 17/8”. Viewing surface approx. 1¼” from wall.



Specifications—Clarion

_____ Projection screens, size _____ h. x _____ w. (overall size), designed for permanent wall mounting. Extruded aluminum base frame, equipped with snaps set on 6” centers. Extruded aluminum trim frame forms 1¼” border. Trim frame finished with (select: matt black/white thermosetting acrylic; burgundy/dove grey/beige/black laminate; light/medium/dark oak/walnut/mahogany hardwood; optional black VEL-TEX textile). Viewing surface to be seamless (select: M1300/M2500/HiDEF GREY/glass beaded/optional AT1200). Viewing surfaces to have reinforced black webbing on all four sides with snaps to fit base frame. Webbing completely concealed by trim frame. Trim frame equipped with mounting flange that mates with wall brackets.

Clarion—Tilting Style

The CLARION and WRAPAROUND STYLE CLARION are available with a system to tilt the entire assembly away from the wall, to any desired angle (up to 20°). Tilting the screen eliminates keystone with overhead projectors, LCD projection panels and floor-mounted video projectors. Manual and motorized systems available: motorized systems controlled by one 3-position switch or choose from options on page 5.

Specifications—Clarion with Tilting Option

(Add the following to the specification for the desired Clarion model)

Screen assembly hinged at the bottom to mounting angle, which is securely mounted to wall. Tilting hardware fully concealed behind screen. Screen to tilt to any position 0-20°, with safety chains. Starter spring to force screen to tilt when screen is operated.

Crank-Operated Tilt: Crank operator (fixed/detachable; fixed standard), behind right side of screen. Gearbox ratio minimum 5:1 with tilt stop.

Motorized Tilt: 110-120V., 60 HZ. 3-wire motor behind lower right corner of screen, instantly reversible, lifetime lubricated, with internal thermal overload protector and electric brake. Limit switches accessible with screen tilted. 3-position control switch.



Colors are reproduced as accurately as possible within the limitations of the printing process.

Dimensions & Data—Clarion

	Viewing Area H x W	Overall Size H x W	Net Wt.	M1300	M2500	HiDef Grey	Glass Beaded	AT1200
AV Format	50" x 50"	53½" x 53½"	31	✓	✓	✓	✓	✓
	60" x 60"	63½" x 63½"	39	✓	✓	✓	✓	✓
	70" x 70"	73½" x 73½"	48	✓	✓	✓	✓	✓
	84" x 84"	87½" x 87½"	55	✓	✓	✓	✓	✓
	8' x 8'	99½" x 99½"	63	✓	✓	✓	✓	✓
	9' x 9'	111½" x 111½"	71	✓	✓	✓	✓	✓
	10' x 10'	123½" x 123½"	79	✓	✓	✓	✓	✓
Nominal Diagonal	Viewing Area H x W	Overall Size H x W	Net Wt.					
NTSC Format (3:4)								
6'	43" x 57"	46½" x 60½"	35	✓	✓	✓	✓	✓
6½'	47" x 63"	50½" x 66½"	37	✓	✓	✓	✓	✓
7'	50" x 67"	53½" x 70½"	38	✓	✓	✓	✓	✓
7½'	54" x 72"	57½" x 75½"	42	✓	✓	✓	✓	✓
100"	60" x 80"	63½" x 83½"	47	✓	✓	✓	✓	✓
10'	70" x 94"	73½" x 97½"	55	✓	✓	✓	✓	✓
10'	72" x 96"	75½" x 99½"	55	✓	✓	✓	✓	✓
150"	90" x 120"	93½" x 123½"	72	✓	✓	✓	✓	✓
15'	108" x 144"	111½" x 147½"	80	✓	✓	✓	✓	✓

HDTV and WideScreen formats available.