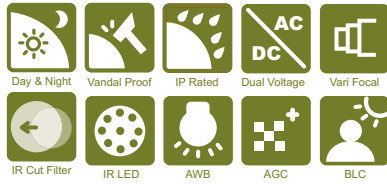


PIH-0746X

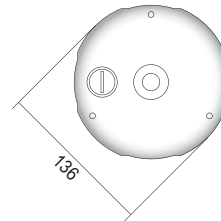
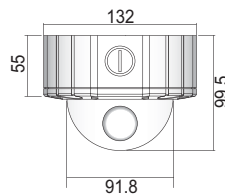
- Radiant Distance Up to 21M
- Aspherical Varifocal Lens
- High Quality ED Glass Lens
- IP 68 Rating
- Impact Resistant Polycarbonate Dome Cover
- Tamper Proof Screws
- Dual Voltage AC 24V / DC 12V
- Test Monitor Connection Inside
- Choice of Lenses
- Automatically Activates LED : Below 10 Lux



Vandal Resistant Varifocal IR Dome Camera



Dimension Unit : mm



Specifications

Model	PIH-0746XWN	PIH-0746XWP	PIH-0746XSN	PIH-0746XSP
System	NTSC	PAL	NTSC	PAL
Power Input Voltage	DC 12V ±10% / AC 24V ±10%			
Lens	Focal Length	2.9~10mm		9~22mm
	Iris	F1.2		F1.5
	Angle of View	H	94.6° ~ 28.8°	30.6° ~ 13°
		V	68.4° ~ 21.6°	22.6° ~ 9.8°
	D	125° ~ 36°	39.2° ~ 16.4°	
Pick Up Element	Sony 1/3" Super HAD CCD Sensor			
Effective Pixels	768(H) x 494(V)	752(H) x 582(V)	768(H) x 494(V)	752(H) x 582(V)
Chip Size	5.59mm(H) x 4.68mm(V)			
H / V Sync. Frequency	15.734KHz / 59.94Hz	15.625KHz / 50Hz	15.734KHz / 59.94Hz	15.625KHz / 50Hz
Sync. Mode	Internal			
Scanning System	2 : 1 Interlace			
Infrared Cut Filter	Auto Selectable / Automatic Switch from Color Mode to Monochrome			
Resolution	Color: 480 TV Lines / Mono: 520 TV Lines			
Min. Illumination	Color: 0.1 Lux at F1.2 / Mono: 0.02 Lux at F1.2			
	0 Lux with IR On			
S/N Ratio	More than 50dB (AGC OFF)			
Auto Gain Control	36dB Variable Gain			
White Balance	ATW			
Aperture Gain Correction	Horizontal, Vertical			
Back Light Compensation	Auto			
Video Output	CVBS1.0Vp-p, 75Ω			
Gamma Characteristic	$\gamma = 0.45$			
Power Consumption	DC12V /6.2W ; AC24V / 4.5W			
Vandal Proof	Withstand a blow from a 10lbs Sledgehammer			
IP Rating	IP 68			
Operating Temperature	-10°C ~ +50°C (14°F ~ 122°F)			
Infrared LED	Peak Wavelength	850nm		
	Beam Spread	30°		
	Radiant Distance	21m		
Dimension	Dome: Φ91.8, Base : Φ136 x 55mm			
Weight	1200g			

Design and specifications are subject to change without notice.