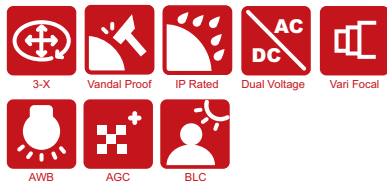


PIH-232X/234X

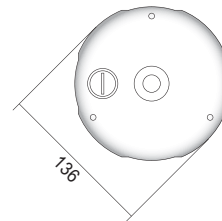
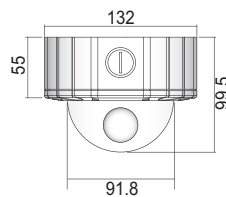
- Weather & Impact Resistant Design
- 3-Axis Camera Construction
- Tamper-proof Screws
- Polycarbonate Dome Cover & Aluminum Die-cast Housing
- 3X High Definition Manual Varifocal Lens
- AC 24V / DC 12V Dual Voltage Input
- RCA Video Connector for Easy Adjustment on Site



Vandal Resistant Varifocal Camera



Dimension Unit : mm



Specifications

Model	Standard Resolution		High Resolution		
	PIH-2326XN	PIH-2326XP	PIH-2346XN	PIH-2346XP	
System	NTSC	PAL	NTSC	PAL	
Power Input Voltage	DC12V ±10% / AC24V ±10%				
Lens	Focal Length	3~9mm			
	Iris	F1.4			
	Angle of View	H	90.2°~ 31.8°		
		V	66.3°~ 23.9°		
D		115.3°~ 39.7°			
Pick Up Element	Sony 1/3" Super HAD CCD Sensor				
Effective Pixels	510(H) x 492(V)	500(H) x 582(V)	768(H) x 494(V)	752(H) x 582(V)	
Chip Size	5.59mm(H) x 4.68mm(V)				
H / V Sync. Frequency	15.734KHz / 59.94Hz	15.625KHz / 50Hz	15.734KHz / 59.94Hz	15.625KHz / 50Hz	
Sync. Mode	Internal				
Scanning System	2 : 1 Interlace				
Resolution	380 TV Lines		480 TV Lines		
Min. Illumination	0.1 Lux / F1.4		0.18 Lux / F1.4		
S/N Ratio	More than 50dB (AGC OFF)				
Auto Gain Control	36dB Variable Gain				
White Balance	ATW				
Aperture Gain Correction	Horizontal, Vertical				
Back Light Compensation	Auto				
Video Output	CVBS1.0Vp-p , 75Ω				
Gamma Characteristic	γ = 0.45				
Power Consumption	DC12V / 3.0W ; AC24V / 2.5W				
Vandal Proof	Withstand a blow from a 10lbs Sledgehammer				
IP Rating	IP 68				
Operating Temperature	-10°C ~ +50°C (14°F ~ 122°F)				
Dimension	Dome : Φ91.8, Base & Fix Ring : Φ136 x 55mm				
Weight	1200g				

Design and specifications are subject to change without notice.