

premium security



Premium 16 Channel Stand-Alone DVR

SVR-1650

- Latest MPEG-4 compression algorithm technology, 16 channel 480fps video recording
- Built-in 250GB HDD, expandable up to 2TB (4 HDD)
- User friendly GUI menu & easy-to-use mouse / remote control
- DVD+RW standard, front USB port, front A/V output port
- Handy buttons on a sensuously designed aluminum body in beautiful black



SAMSUNG

Speed, performance, ease of use, and terrific design..

The ONE that has it all.. SVR-1650

The SVR-1650 is a 16 channel stand-alone DVR showcasing state-of-the-art digital image processing technology. The cutting-edge MPEG-4 compression technology was used to build the SVR-1650 to give it a capability to record video at 480fps. The SVR-1650's dual image processing unit stabilizes network transmissions and improves network speed to an incomparable level. You can configure up to 4 internal HDD for 720 x 480, crystal clear, high resolution image data storage, and the standard DVD+RW, together with a USB memory stick, provide convenient ways to back-up large data. The SVR-1650 is controlled by a mouse, something you are already familiar with. Together with the user friendly GUI, controlling the SVR-1650 couldn't be easier. It also comes with standard multi-protocol for easy networking with other peripherals. All the premium functions are included in the SVR-1650 to give you the highest level of security, and its luxurious design will upgrade the elegance of your video surveillance system.

design

The Design

Hand polished look in mirror finish black

The SVR-1650 has a feature of hand polished look in mirror finish black to reinforce trust and class, and the finely detailed aluminum body adds solidity to this security product.



Logical control button and jog-dial location

For user convenience, all the function buttons are logically placed, and the jog-dial located on the front center is for simple but effective image searches. Checking operational status of different functions is as easy as looking at sky-blue, white, or red LED lights.



Luxury &
Stylish



recording



High Quality Picture...

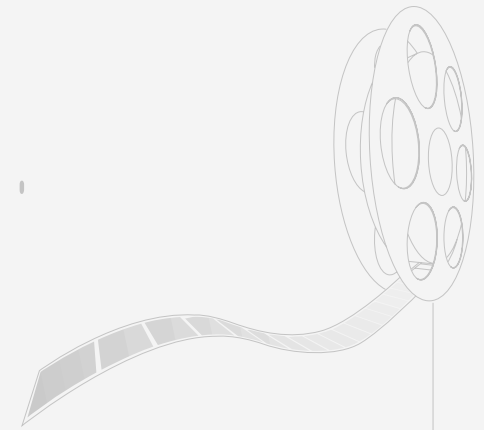
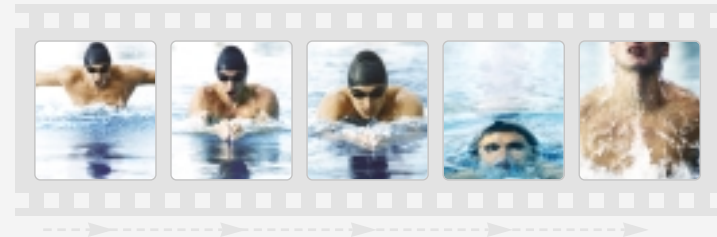


Image Capability



480fps all channel real-time recording using MPEG-4 technology

The latest MPEG-4 compression method supported by the SVR-1650 processes 480fps video recording and playing simultaneously, and its superior capability allows it not to lose even a single image.



Supports high resolution image

The SVR-1650 supports 720 x 480 and other various high resolution images making monitoring of crystal clear DVD-like high-definition images under any environment possible.



Conventional DVR



SVR-1650



Multiple recording settings

Empowered by the 480fps recording capability, the SVR-1650 can be set for general, event, and / or scheduled recording simultaneously, so it is ready to handle any operating environment. Additionally, the image quality can be set to four different levels for more effective control of recording quality.



General / Event recording



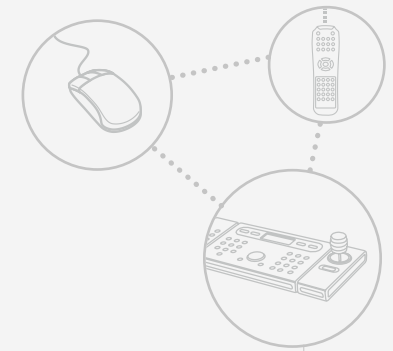
Scheduled recording

user-friendly



START-REC TIME	2006/09/10	01:40:00
END-REC TIME	2006/09/10	01:45:00
SEARCH TIME	2006/09/10	11:51:00

Ease & Convenience...



Ease of Use



Variety of input controllers including mouse, remote control, and a keyboard

The SVR-1650 comes with an infrared wireless remote control, and offers simple GUI and a mouse for experienced PC users. The graphic menu of the SVR-1650 has Hot Function icons to aid mouse users and to provide a better working environment. Additionally, a system keyboard controller (SCC-3100/3000) can be used to control Speed Dome cameras connected to a DVR plus multiple SVR-1650 simultaneously, providing an easy and convenient user environment only a standalone product can provide.



Hot Function icons



Easy-to-use and convenient GUI

Pop-up style menu and graphic GUI makes learning how to operate the SVR-1650 very easy, even for a digital equipment novice.



Quick Setup Screen Setup Record Setup Event Setup Communication System Setup Search Copy Exit



Front USB port and AV output port

2 front USB ports are very accessible for connecting mouse or back-up devices like DVD+RW or USB memory sticks. Video/audio ports are also located on the front so connecting cables - for system expansion or for connecting other peripherals- is very easy.



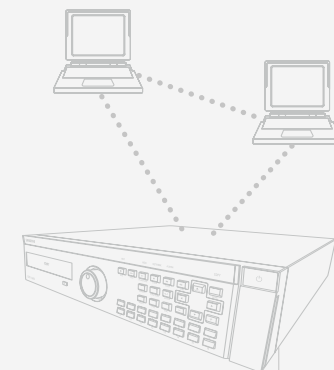
USB memory stick connecting



Video/audio ports connecting



Powerful Network...



Network



Optimal network speed

The SVR-1650 recognizes line status automatically and configures the optimal network according to its environment.



Stable network speed

Image processing chip for networking was used in the SVR-1650 to prevent interference from the main system's surveillance, record, play, and other settings during data transmissions. Therefore, it performs at its best and transmits data at a maximum speed of 480fps under any circumstance.

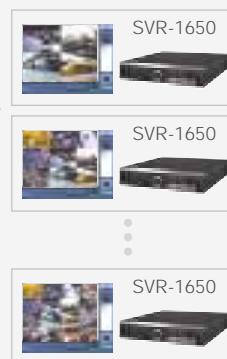


16 Channel Display



Manages up to 5 DVR simultaneously

The Network Viewer, a standard application provided, can be connected to five SVR-1650 and manage all of them simultaneously. The Network Viewer supports live video monitoring of DVR, replay, menu setting modification, PTZ camera control, and other functions through a network.



Network Viewer



expansion



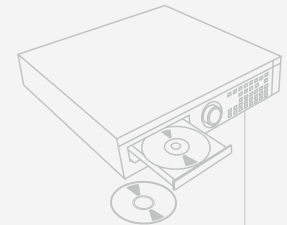
Back up...

Scalability



Large data back up using DVD+RW

Because the SVR-1650 is a premium DVR, it comes with a DVD+RW to support high capacity, high resolution record data back-ups. The front USB port can also be used for easy data back-up to a USB memory stick.



Built-in 250GB HDD, expandable up to 2TB

The SVR-1650 comes equipped with large 250GB internal HDD and supports up to four internal HDD making it ideal for long-term data storage. (Up to 2TB with 4 x 500GB HDD)



Supports scalability of DVR/Speed Dome using System Keyboard Controller

With the System Keyboard Controller SCC-3100/3000, up to 255 DVR and Speed Dome can be controlled. The SVR-1650 provides multi-protocol to support connecting and controlling a variety of peripherals which makes it easy to build medium to large security systems.



SCC-3100/3000



Supports text recording of ATM/POS transaction

The SVR-1650 can process text inputs and save, replay, or display them on a monitor. These capabilities are ideal for networking with POS or ATM systems in financial institutes or retail businesses.



ATM/POS



Audio port : 4 in / 2 out, Sensor port : 16 in / 4 out

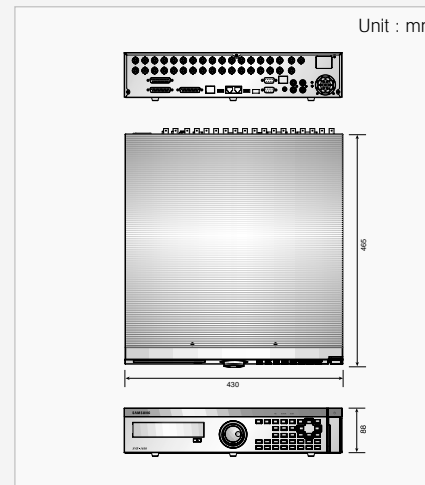
The SVR-1650 supports 4-channel audio input line, and the inputted audio data can be saved simultaneously with the video data and is searchable. Multiple system configurations can be built by using the SVR-1650's 16 channel sensor input and 4-channel relay output.



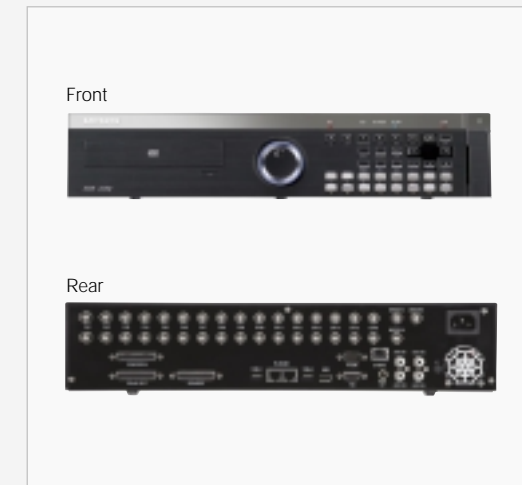
Specifications

Mode		SVR-1650	
		NTSC	PAL
Power Source		100-240V AC, 50/60Hz	
Power Consumption		Max. 75W (1 HDD)	
Video Input		16 Channels	
Video Output	Monitor A	2 BNC, RCA, VGA	
	Monitor B	1 BNC (Single / Multi)	
Compression		MPEG-4	
Display	Speed	480fps	400fps
	Resolution	720 x 480	720 x 576
	Multi Screen	1 / 4 / 9 / 16, PIP	
Recording	Speed / Resolution	120fps (D1, 704 x 480)	100fps (D1, 704 x 576)
		240fps (Half D1, 704 x 240)	200fps (Half D1, 704 x 288)
	Mode	480fps (CIF, 352 x 240)	400fps (CIF, 352 x 288)
		Manual + Event, Schedule + Event	
HDD		250GB 1HDD (Max . 4HDDs)	
Back up		DVD+RW, CD-RW, 3 USB (2 Front) USB memory stick	
Serial Interface		RS-232C, RS-485/422 (RJ-45)	
Sensor Input / Relay Output		16 / 4	
Audio	Input / Output	4 / 2 (1 Front)	
	Interface	RCA jack	
Network	Protocol	TCP/IP, DHCP, SMTP	
	Software	Network viewer	
Control		Remote control (Controllable upto 16DVRs) Keyboard control (SCC-3100/3000), Mouse	
OSD (On Screen Display)		Mouse interfaced stylish icon, Multi-language	
Temperature	Operation	5°C ~ 40°C	
Range	Storage	-10°C ~ 60°C	
Dimensions		430(W) x 88(H) x 465(D)mm	
Weight		8.9kg (1 HDD)	

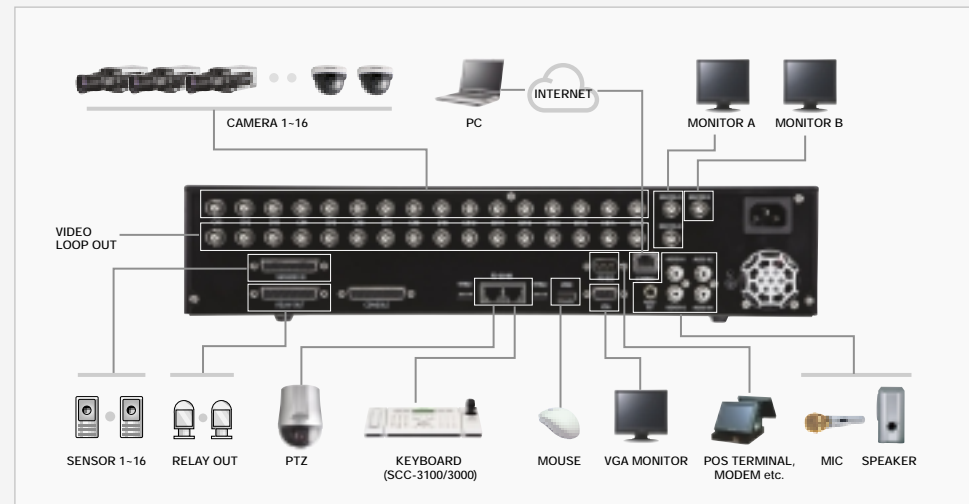
Dimensions



Front / Rear Panel



System Configuration



SAMSUNG TECHWIN CO., LTD.
145-3, Sangdaewon 1-dong, Jungwon-gu,
Seongnam-si, Gyeonggi-do 462-703, Korea
Tel : +82-31-740-8137-8139 Fax : +82-31-740-8145

SAMSUNG OPTO-ELECTRONICS UK, LTD.
Samsung House, 1000 Hillwood Drive,
Hillwood Business Park Chertsey, Surrey KT16 OPS
Tel : +44-1932-45-5308 Fax : +44-1932-45-5325

TIANJIN SAMSUNG OPTO-ELECTRONICS CO., LTD.
7 Pingchang Rd., Nankai Dist. Tianjin 300190, P.R China
Tel : +86-22-2761-4724(33821) Fax : +86-22-2761-6514

■ DISTRIBUTED BY

